



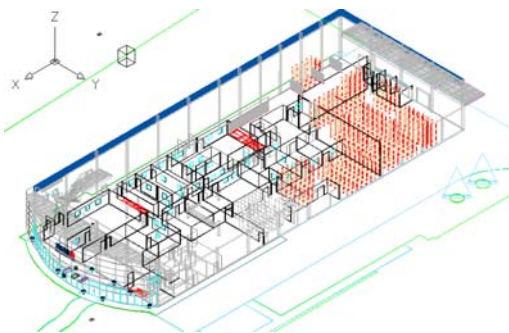
Brazil

Client

Realh & Cia. Ltda.

Location

Campo Grande - SP



Engineering Project Development

Brazilian company specialized in the production of homeopathic drug products of solid, semi-solid and liquids dosage forms to the veterinary market. Located in Campo Grande – MS.

Engineering project to a new production facilities in accordance with Brazilian Veterinary Standards (MAPA).

Total built area of about 3,900 m².

To this Project were raised solutions to:

- Structure
- Electric
- Hydraulics
- HVAC – Air Conditioning
- Utilities
- Architecture
- Fire Protection