

RB PHARMA
Rua Verbo Divino, 1661
3º Andar – Cj. 33
04719-002 São Paulo - SP
Tel./Fax.: +55 11 5182-6455
rbpharma@rbpharma.net
www.rbpharma.net



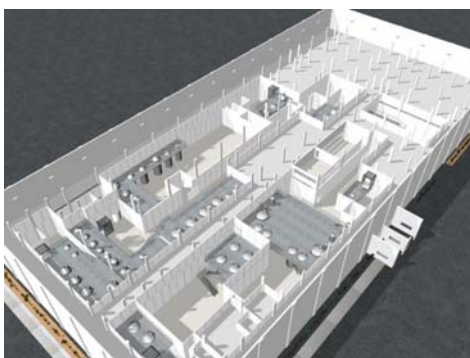
International Saudi Arabia

Client

Saudi Giant Biotechnology

Location

Jeddah



Basic Engineering Project

- Basic Engineering Project Development to a new factory for Human Insulin by Recombinant DNA and fermentation process in bioreactors. Project conception complies with the cGMP requirements established by GCC – Gulf Central Committee for Drug Registration.
- Engineering Project includes Structure, Foundation, Architecture and Civil Engineering, Layout, Electric, Hydraulic, HVAC – Heating Ventilation Air Conditioning, Pharmaceutical Utilities, Process and Automation to comply with Qualification & Validation requirements;
- Total Built Area: 35.000 m² – three floors;
- The installed Productive Capacity will be of 11 million vials of 10 ml per year;